

Cameron Square Mitcham, CR4 3SH

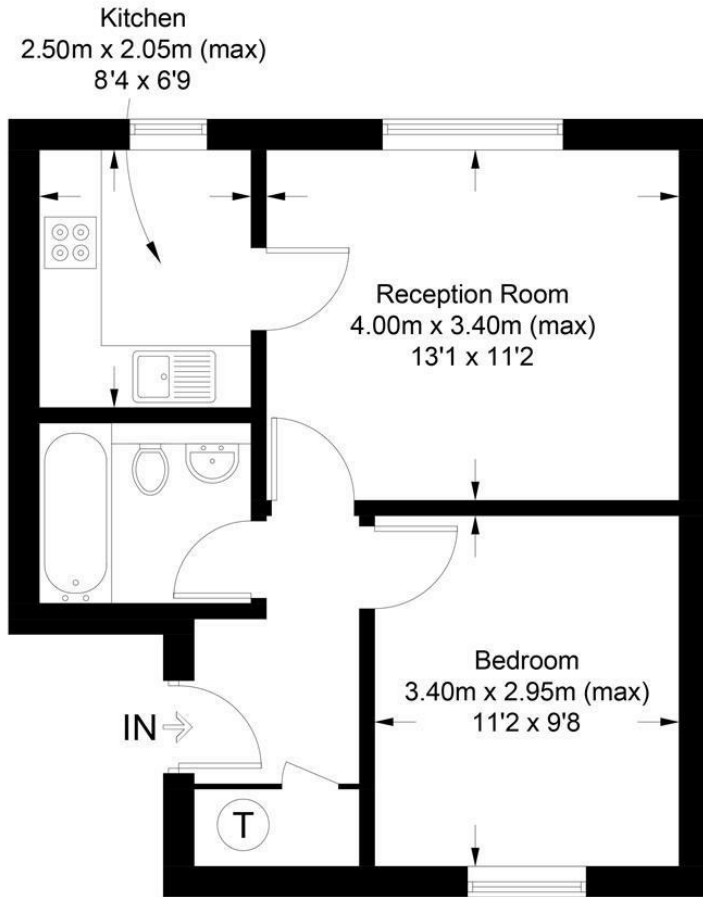
£250,000 Leasehold



A well presented top floor purpose built one bedroom apartment located within a sought after development located within walking distance to Colliers Wood Tube Station and High Street. With No Onward Chain and Allocated Parking would make this a great purchase for any first time buyers looking to get onto the property ladder.

Cameron Square, CR4

Approximate Gross Internal Area = 39.4 sq m / 424 sq ft



This floor plan is for representation purposes only and is not drawn to scale.
The Gross Internal Area includes outbuildings shown on the plan.
Whilst every attempt has been made to ensure the accuracy of the plan measurements of doors, windows and rooms are approximate only and should be checked before making any decisions reliant upon them.
Copyright Bespokeplans.co.uk (ID733088)

- Top Floor
- No Onward Chain
- Well Presented
- Sought After Development
- Allocated Parking
- Close To Transport Links



Energy Efficiency Rating		Environmental Impact (CO ₂) Rating	
Current	Potential	Current	Potential
England & Wales EU Directive 2002/91/EC		England & Wales EU Directive 2002/91/EC	

For Free Mortgage Quote and Best Mortgage Rates, call an Ellisons Mortgage Advisor on 020 8544 0518



Although these particulars are believed to be correct, their accuracy is not guaranteed and they do not form part of any contract.

Celebrating 30 years
of successful Sales and
Lettings in Merton

